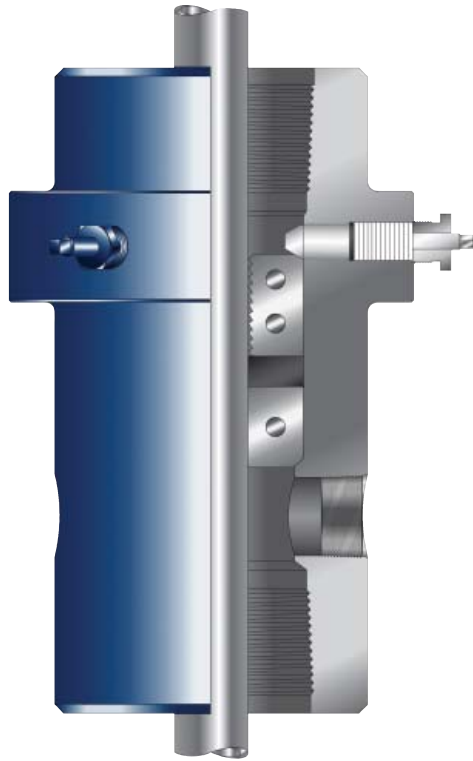


# MODEL DN THREADED HANGER



## Description

The work-through style hanger body uses a two-piece split seal and slip assembly that attaches to the coiled tubing string after it is run in and is at hang-off depth. The slip and seal assembly is fastened to the coiled tubing string and lowered into the hanger bore to seat on a shoulder in the hanger bore, and then it is locked in place with anchor bolts. During well completion operations, a Select 5" ID pressure window and 5" ID Annular Control Valve are used to lubricate the slip and seal assembly into the lock-down position.

Like all hangers using the anchor bolt lock-down system, operators do not have to rely on string weight alone to ensure positive seal. After slip and seal set is installed in the hanger body, compressive force from the injector is applied to the string. The combined compression force is then locked in using the anchor bolts.

## Applications

- Higher pressure wells requiring flexibility of tubing type (jointed / coil).

## Features & Benefits

- Universal design allows deployment of jointed pipe or coiled tubing.

## Specifications

Coiled Tubing Sizes (in. / mm)	Side Ports (in. / mm)	PSI (MPa)
1 (25.40)	Two 2 (50.80)	5000 (34)
1.25 (31.75)		
1.5 (38.10)		
1.75 (44.45)		
2 (50.80)		
2.375 (60.32)		

Company  
Services  
CT Completions  
CT Surface  
CT Sub-Surface  
CT Service Tools  
Wellheads  
Slickline  
Engineering Data  
Index