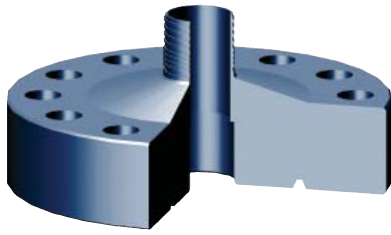


TUBING HEAD ADAPTERS

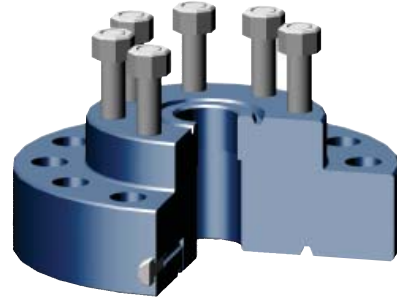
Company
Services
CT Completions
CT Surface
CT Sub-Surface
CT Service Tools
Wellheads
Slickline
Engineering Data
Index



B-1 Tubing Head Adapter

Flange Size	PSI	Top Connection	Suspension Threads	Approximate Weight (lbs)
7 1/16"	2,000	2 3/8" Up Tbg	2 3/8" Up Tbg	140
7 1/16"	2,000	2 7/8" Up Tbg	2 7/8" Up Tbg	130
7 1/16"	3,000	2 3/8" Up Tbg	2 3/8" Up Tbg	160
7 1/16"	3,000	2 7/8" Up Tbg	2 7/8" Up Tbg	150

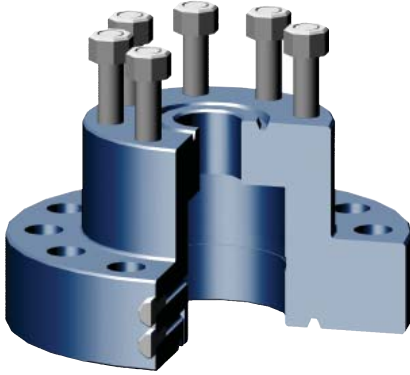
Additional sizes available upon request.



B2P Tubing Head Adapter

Flange Size	PSI	Top Connection	Suspension Threads	Approximate Weight (lbs)
7 1/16"	3,000	2 1/16" 5,000	2 3/8" Up Tbg	114
7 1/16"	3,000	2 9/16" 5,000	2 7/8" Up Tbg	170
7 1/16"	5,000	2 1/16" 5,000	2 3/8" Up Tbg	160
7 1/16"	5,000	2 9/16" 5,000	2 7/8" Up Tbg	230

Additional sizes available upon request.



A5P Tubing Head Adapter

Flange Size	PSI	Top Connection	D Prep	Approximate Weight (lbs)
7 1/16"	3,000	2 1/16" 5,000	5 1/2"	148
7 1/16"	3,000	2 9/16" 5,000	5 1/2"	158
7 1/16"	5,000	2 1/16" 5,000	5 1/2"	178
7 1/16"	5,000	2 9/16" 5,000	5 1/2"	188
7 1/16"	10,000	2 1/16" 10,000	5 1/2"	-
7 1/16"	10,000	2 9/16" 10,000	5 1/2"	-

Additional sizes available upon request. Some sizes are available in 410 stainless steel.