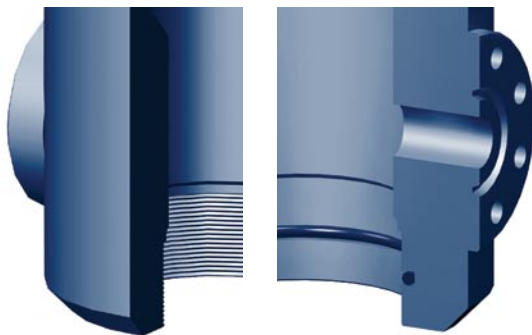


Standard
C22 with slip on weld prep.



Optional
C22-BP has lockscrews to hold the wear bushing in place.



Optional
Threaded bottom prep, slip on weld prep with O-Ring.

Description

WC-22 casing heads feature a versatile straight bore design that can accept a wide variety of slip and mandrel type casing hangers.

Features

- Features a 45° landing shoulder capable of supporting maximum loads.
- Prevents test plugs from wedging under pressure.

Outlets

- Line pipe outlets.
- Studded side outlets.

Casing Hanger Compatibility

- WC-21 and WC-22 slip-type casing hangers.
- Mandrel style casing hangers.

Manufacturing Standard

- API-6A, PSL-1, DD, L-U, PR-1.

Availability

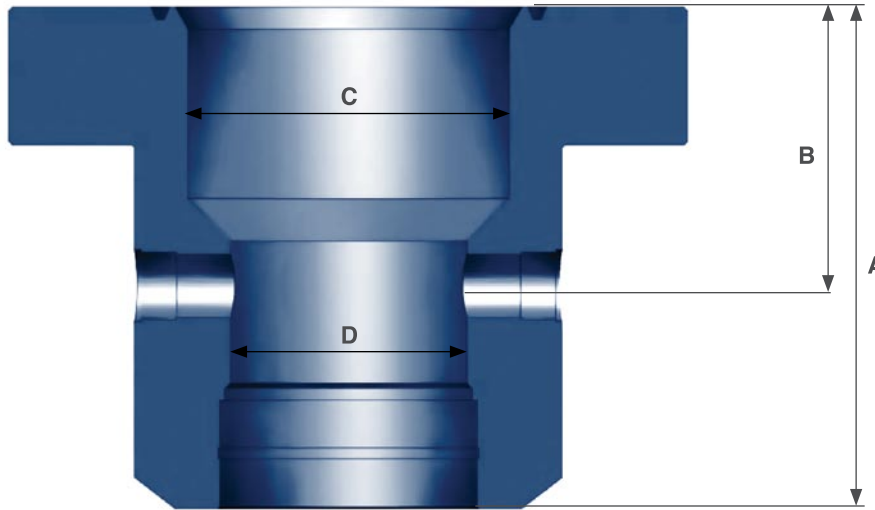
- Additional sizes available upon request.
- Available in WC-29 profile. (Available upon request)

Lockscrews

- WC-22-BP casing heads are supplied with (2) lockscrews for wear bushing retention.
- WC-22-L and WC-29-L casing heads are supplied with a full set of lockscrews for mandrel casing hanger and pack-off retention. (Available upon request)

Bottom Connections

- Slip-on weld.
- Slip-on weld with O-ring.
- Threaded. (8rd, Buttress)



A = Overall height
B = Distance from flange face to center line of outlet
C = Bowl diameter
D = Minimum bore

Specifications

Flange Size	PSI	Casing Size	A	B	C	D	Approximate Weight (lbs)
9"	2,000	7"	16 5/8"	10 1/4"	8"	-	-
9"	2,000	8 5/8"	16 5/8"	10 1/4"	8"	-	-
9"	3,000	7"	17 7/8"	10 5/8"	8"	-	-
9"	3,000	8 5/8"	17 7/8"	10 5/8"	8"	-	-
11"	2,000	9 5/8"	17"	10 1/8"	10 7/8"	9"	505
11"	3,000	8 5/8"	17"	10 1/8"	10 7/8"	8"	535
11"	3,000	9 5/8"	17"	10 1/8"	10 7/8"	9"	525
11"	3,000	10 3/4"	17"	10 1/8"	10 7/8"	10"	490
11"	5,000	8 5/8"	17"	10 1/2"	10 7/8"	8"	685
11"	5,000	9 5/8"	17"	10 1/2"	10 7/8"	9"	680
11"	5,000	10 3/4"	17"	10 1/2"	10 7/8"	10"	670
13 5/8"	3,000	13 3/8"	17"	10 1/4"	13 1/2"	12 1/2"	570
13 5/8"	5,000	13 3/8"	19"	10 1/4"	13 1/2"	12 3/8"	1000